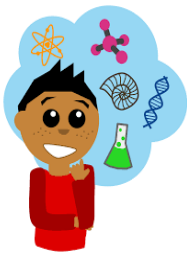


Student Attributes and Code of Conduct

The institution strives through its curricular, co-curricular and extracurricular activities delivering generic attributes to students enabling them to achieve success in their studies and beyond such as:

- Attitude
- Academic skills
- Interpersonal skills
- Self-motivation and self-discipline
- Time-management
- Perceptiveness

Specific attributes that enable the students for successful engineering profession are



Engineering Knowledge: Apply the knowledge of mathematics, science, engineering fundamentals, and an engineering specialization to the solution of complex engineering problems



Problem Analysis: Identify, formulate, research literature, and analyze complex engineering problems reaching substantiated conclusions using first principles of mathematics, natural sciences, and engineering sciences



Design/development of solutions: Design solutions for complex engineering problems and design system components or processes that meet the specified needs with appropriate consideration for the public health and safety, and the cultural, societal, and environmental considerations



Conduct investigations of complex problems: The problems that cannot be solved by straightforward application of knowledge, theories and techniques applicable to the engineering discipline



Modern tool usage: Create, select, and apply appropriate techniques, resources, and modern engineering and IT tools including prediction and modeling to complex engineering activities with an understanding of the limitations.



The engineer and society: Apply reasoning informed by the contextual knowledge to assess societal, health, safety, legal and cultural issues and the consequent responsibilities relevant to the professional engineering practice.



Environment and sustainability: Understand the impact of the professional engineering solutions in societal and environmental contexts, and demonstrate the knowledge of, and need for sustainable development.



Ethics: Apply ethical principles and commit to professional ethics and responsibilities and norms of the engineering practice.



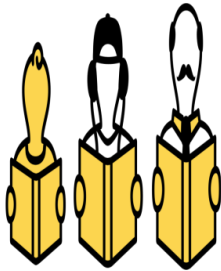
Individual and team work: Function effectively as an individual, and as a member or leader in diverse teams, and in multidisciplinary settings.



Communication: Communicate effectively on complex engineering activities with the engineering community and with society at large, such as, being able to comprehend and write effective reports and design documentation, make effective presentations, and give and receive clear instructions.



Project management and finance: Demonstrate knowledge and understanding of the engineering and management principles and apply these to one's own work, as a member and leader in a team, to manage projects and in multidisciplinary environments.



Life-long learning: Recognize the need for, and have the preparation and ability to engage in independent and life-long learning in the broadest context of technological change.

Code of Conduct

- Every student must carry his/her identity card while being present on the College Premises.
- Every student is expected to maintain the general cleanliness within the classrooms, laboratories and the campus in general.
- Every student will remain answerable to the college authority for his/her activity and conduct on the College Premises.
- Any act which obstructs teaching, research, administrative activity and other proceedings of the college is strictly prohibited.
- Chewing paan, paan masala, gutka or any other tobacco products, smoking or consumption of any other intoxicating products is strictly prohibited.

- Playing cards, spitting and loitering are strictly prohibited inside the college & hostel campus and shall invite severe punishment/disciplinary action.
- Use of Cell phones is strictly prohibited during class hour.
- Attempted or actual theft of and/or damage to property of the College, or property of a member of the College community, or other personal or public property, on or off campus will be considered as a punishable act.
- Students should handle the college properties with care. Damage to the furniture or any other materials may lead to penalty or suspension from the college.
- Indulging ragging, anti-institutional, anti-national, antisocial, communal, immoral or political expressions and activities within the Campus and hostel are strongly prohibited as well as punishable.
- Without the permission of the Principal, Students are not allowed to circulate any printed materials within the college campus.
- Latecomers will not be entertained to enter into the classroom.
- A student should maintain at least 75% attendance in the Lectures of every subject and 100% overall performance. Otherwise, he or she will not be allowed for semester end examination.
- Students are required to check the Notice Board and also website of the college for important announcements.